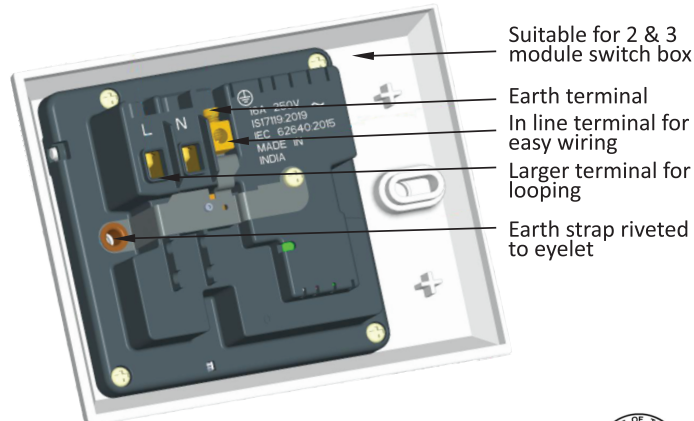


## Specifications

| Product Characteristics   | Value                          |
|---------------------------|--------------------------------|
| Rated Voltage             | 230V AC 50 Hz                  |
| Maximum Operating current | 16 A                           |
| Rated Trip Current        | 30mA                           |
| Rated Tripping time       | < 40ms @ 5 * IΔN               |
| Poles                     | 2                              |
| Product Dimensions        | 118 x 94 x 40 (mm)             |
| Suitable Box              | Indian-2 or 3 module metal Box |
| Warranty                  | 1 year                         |
| Conforms to               | IEC 62640:2015 & IS 17119:2019 |
| Breaking                  | Double pole, Double break      |
| Color                     | White                          |



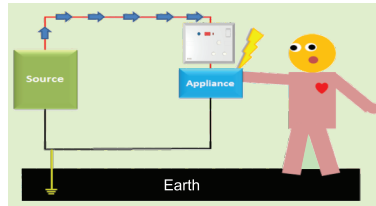
Tested at

**intertek**  
Total Quality. Assured.



**EVIQ**tech

## With ProSafe RCD



In the presence of **ProSafe** protection, within 30mA leakage from damaged appliance Cord, bad wiring/joints etc the RCD acts and disconnect the flow of current within 40 ms and hence saves the life.

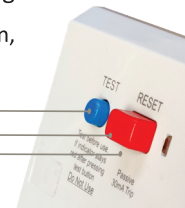
Only the connected appliance is isolated by ProSafe, leaving all other circuits unaffected

## Instructions

Test before use and frequently by pressing the Test button:

If Indicator stays red after pressing Test button, Do Not Use. Contact certified electrician!

Test button  
Reset button  
Electrical Indicator



## Contact Us

Manufactured by

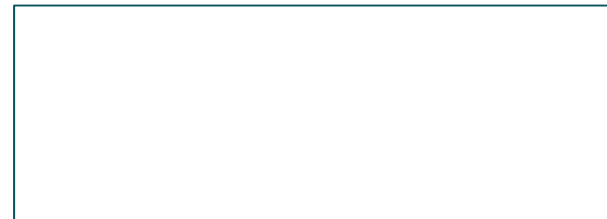
**EVIQtech Solutions Pvt. Ltd.**

Email: [info@eviqtech.com](mailto:info@eviqtech.com)

Website: [www.eviqtech.com](http://www.eviqtech.com)

Phone: +91 9840303287

Authorized Distributor:



**EVIQ**tech

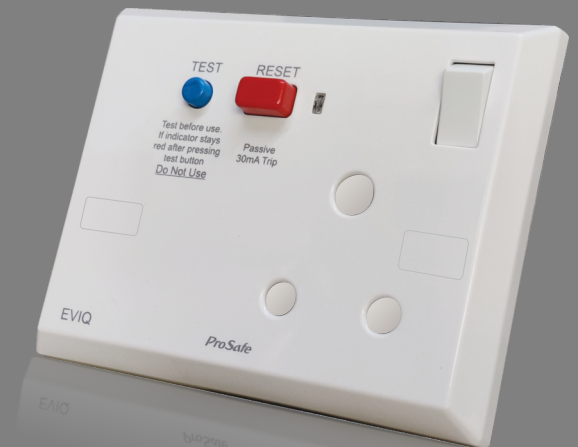
# ProSafe

...the Life Saver

## INDIA'S First... SRC

Socket Residual Current Device

Conceived, Designed and  
Made in India



Use ProSafe SRC to save you from:

- Fatal electric shock due to leakage current
- Fire hazards due to low current arcing

Use wherever you handle your appliances with wet area / wet hands like Kitchen, Bathrooms, Fridges, Washing machines, Iron boxes etc

Patent applied for

**EVIQ**tech



## Why SRCD?

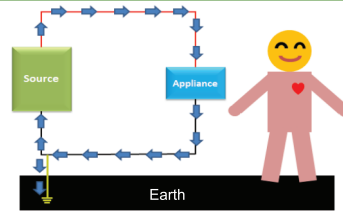
A **Socket Residual Current Device** prevents injuries and fatalities in case of a current leakage in appliances placed in electric leak-prone environments like Wet Grinders, Iron Boxes, Washing Machines etc...

In the case of a current leak, **ProSafe** can disconnect and isolate the connected appliance within 40 ms, even before the leaked current can build up to 30 mA. All other circuits remain unaffected as only the appliance connected to **ProSafe** is isolated



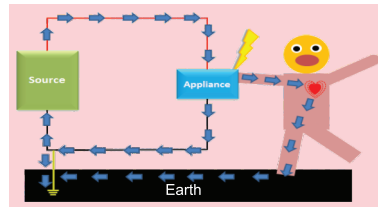
| Current (mA) | Effects on human Body    |
|--------------|--------------------------|
| 0.5 - 3      | Tingling sensations      |
| 3 - 10       | Muscular contraction     |
| 10-30        | Let-go threshold         |
| 30-75        | Respiratory paralysis    |
| 100-200      | Ventricular fibrillation |
| > 200        | Fatality                 |

## Ideal Condition



If the cord, the joints and the appliance are healthy and not damaged, there is no possibility of a leakage unless there is direct contact with a live part

## Practically...



When RCD protection is not available, a damaged appliance cord or bad wiring may cause current leakage and lead to death.

## When only RCCB present at main DB



In the event of a leakage, the RCCB installed at the main Distribution board trips and disconnects the entire house. It is difficult to locate the fault in this case and hence the RCCB is replaced with MCB to forego the nuisance. This risks human life and property damage

## Features

- Provides safety against electric shock
- Does not trip in the event of power failure
- Identifying leakage path is very simple
- Provides protection against Line to ground arcing.
- High speed and Reliable Electromechanical latching mechanism
- Robust, Double Pole switching.
- Electrical & Mechanical indication of contact position.
- In-line terminal arrangement for easy wiring and screw driver accessibility.
- Suitable for both Two and Three module Indian Switch box

