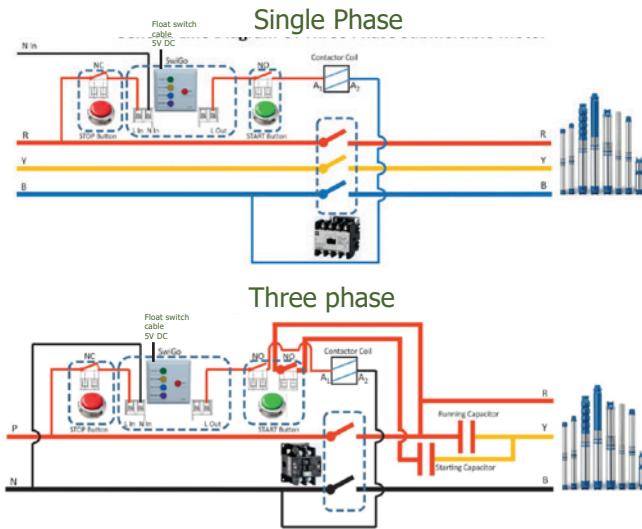


General Line diagrams for submersible motors



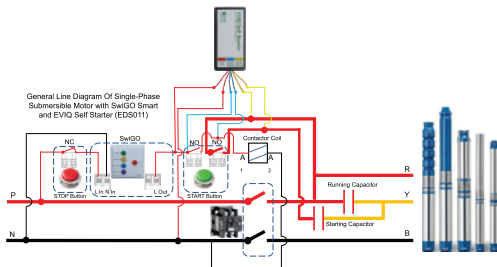
Using with Submersible Pumps

To auto start the starter of Single Phase submersible pumps, use EVIQ Self Starter (EDS011)

250V, 50 Hz, Single Phase
Works with leading brands of Motor Starters with Contactors.



Line diagram of SwiGO Smart with Single phase submersible pumps and EVIQ self starter



Variants

SwiGO is available with 4 variants of Pre-programmed physical Timer Switches.

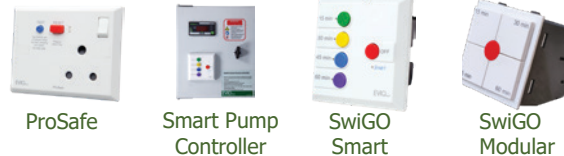


EDS001 15, 30, 45, 60 mins EDS002 5, 10, 15, 20 mins



EDS003 4, 8, 12, 16 hours EDS004 1, 2, 3, 4 hours

EVIQtech's other Energy and Life Saving Products



For instructions scan:



SwiGO tested as per IEC 60669-2 at CETL



EVIQtech
Safe and smart electrical accessories
Made in India. Made by EVIQtech.

Email at: info@eviqtech.com
Website: www.eviqtech.com
Ph No. : +91 9840303287

SwiGO®

Switch and Go... It is okay to forget...



A timer switch

for Water Pumps, Water Heaters and other household electrical products

2HP | 16A | 3kW

Now!

Withstands High Voltages upto 440V AC & With Float Switch output

EVIQtech
Safe and smart electrical accessories

SwiGO simplifies daily home life

SwiGO is perfect for use with appliances that need to be run for periods of time and are frequently forgetting to be switched off.

- SwiGO is designed to be simple. Anybody can operate the device including disadvantaged people like the elderly
- It is easy to setup and can be used with almost any appliance that requires timed operation
- SwiGO can withstand High Voltages upto 440V (SwiGO will cut-off output above 290V) and not be damaged. Your investment is safe.



SwiGO can be used with daily home appliances as well as for industrial use cases upto 16A | 3kW | 2HP motors

SwiGO Features

For simple physical operation, 4 buttons with pre-set times are available.

OFF button for forced stop

Robust design (Strong and Thick material)

A physical LED indicator blinks for whichever time mode is active.

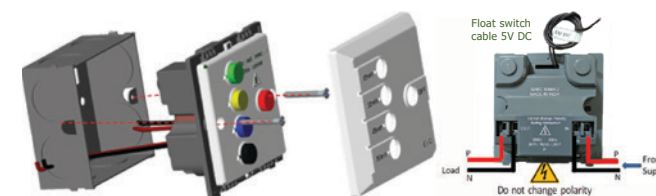
Plastic parts are fire resistant and virtually unbreakable Polycarbonate

Usage

1. The four colour buttons are used to switch-ON the load. It will be switched ON for the time printed
2. The RED button is used to switch-OFF before timer for emergency.
3. The red light indication shows that the load is switched-ON for the time specified
4. Line and Neutral output to load
5. Line and Neutral from supply



Installation



1. Remove the front plate.
2. Take the L and N wire out of mounting box and wire it as shown in wiring instructions, observing correct polarity.
3. Insert the wired SwiGO into the mounting box.
4. Fix the mounting screw connecting the module and the box
5. Fix the clip-on faceplate on the module and assure the fit.
6. 5V DC output cable: Connect float switch for safe operation. DO NOT CONNECT 230V AC to this cable. (Float Switch connection is optional and is not provided by EVIQtech)

Specifications

Description	Value
Rated Voltage	250V AC 50Hz
Max Withstand Voltage	440V AC
Cut-Off Voltage	>290V AC
DC Output for Float Switch	5V DC
Maximum Operating Current	16AX/2HP/3kW
Suitable Box	Indian 2-Module Box
Mounting Method	Surface
Color	White
Warranty	1 Year
Product weight	140gms
Product Dimensions	87 x 87 x 45 mm