

Applications





Ideal for use with water pump motor, water heaters, kitchen appliances and wherever the operation is to be controlled by time.

Features

- Four white buttons for different time interval based on application
- Red colour OFF button for forced stop
- Robust Design (Strong & Thick material)
- Heavy duty relay
- Plastic parts are made of fire resistant and virtually unbreakable Polycarbonate.
- Cuts off the connected circuit in the time specified
- LED Indication of operating condition

Specifications

Description	Value
Rated Voltage	250V AC 50 Hz
Maximum Load	2HP / 16AX / 3kW
Conforms to standard	IS/IEC 60669-2
Color	White
Suitable Box	Anchor Roma 2 Module space/Brands
Warranty	1 Year
Product Dimensions	51 x48x 54 mm

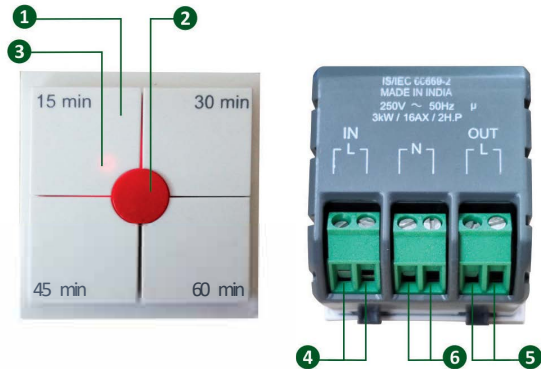
Product	Code	Description
	EDS00IM	For water pump motors up to 2 HP and other household appliances like water heater etc. The Time selection available for 15,30,45,60 minutes
	ms002M	For water pump motors up to 2 HP and other household appliances like water heaters up to 3kW etc. The Time selection available for 5,10,15,20 minutes
	EDS003M	For Lighting load applications up to 16AX. The Time selection available for 4,8,12,16 hours.
	EDS004M	For water pump motors up to 2 HP, Lighting loads up to 16AX & household applications like Exhaust fans, mobile chargers, Wet grinders etc The Time selection available for 1,2,3,4 hours.



IS/IEC 60669-2

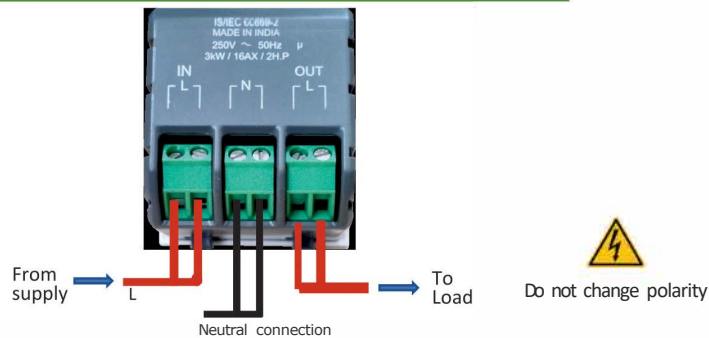
Tested as per
IEC 60669-2 at CETL

Product Description



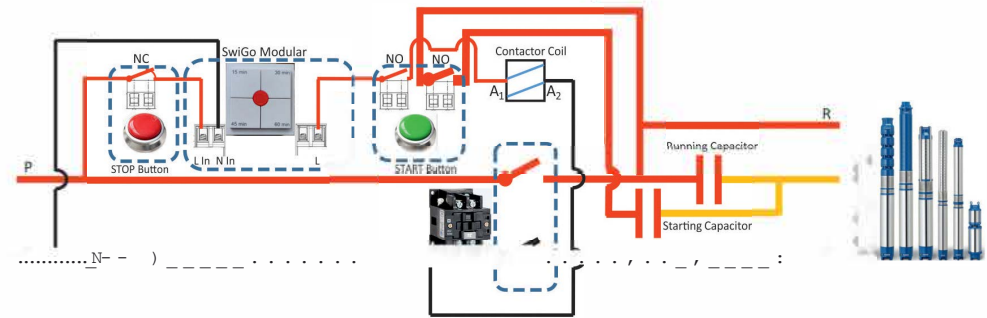
- The four White buttons can be used to switch ON the Load. The load will remain ON for the time specified near the button
- The RED button is used to switch OFF the load in case of emergency or wrong selection of time.
- The Red light indication shows the load is switched ON for the time specified near it.
- C, Line Input from supply
- Line output to load
- Terminal for Neutral connection

Wiring Instruction

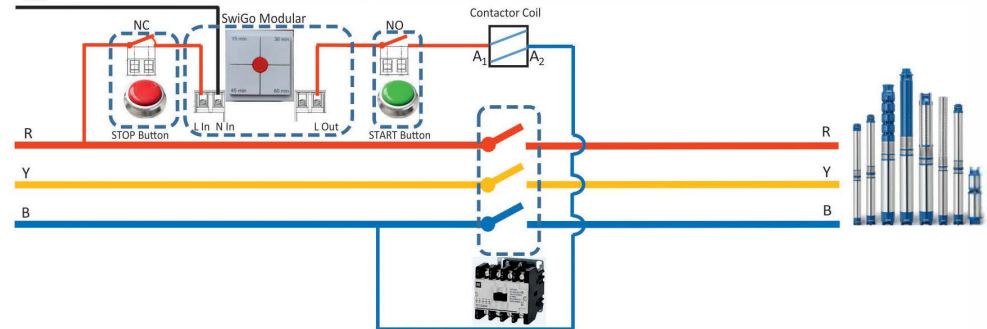


Wiring Diagram- SwiGO with Starter

General Line Diagram Of Single Phase Submersible Motor



General Line Diagram Of Three Phase Submersible Motor



Installation Instruction



Procedure : Insert & click-fit the SwiGO modular switch on to a suitable front plate